

TURNKEY ENVIRONMENTAL CONSULTING, ABATEMENT, REMEDIATION, & DEMOLITION SOLUTIONS

At EIS - Environmental Infrastructure Solutions (EIS), we understand the critical difference between serving customers and providing exceptional customer service. As a leader in turnkey Environmental Consulting & Compliance, Surface & Subsurface, and Facilities & Infrastructure Solutions we are committed to going beyond expectations. You can trust us to listen to your concerns, respond promptly to your requests, stay true to our promises, and address your challenges with integrity and honesty. Our dedication to accountability and excellence is reflected in the positive feedback we consistently receive through outstanding customer service surveys, which reinforce the quality and reliability of our work.

THE EIS FAMILY OF COMPANIES



WHERE WE ARE

ARIZONA

Phoenix

ARKANSAS

Bentonville
Little Rock

COLORADO

Denver
Wheat Ridge

FLORIDA

Jacksonville
Miami
Orlando
Pensacola
Pompano Beach
Tallahassee
Tampa
Zephyrhills

GEORGIA

Albany
Atlanta

IDAHO

Boise

IOWA

Des Moines

LOUISIANA

Baton Rouge
Shreveport

MARYLAND

Jessup/Washington D.C.

MISSISSIPPI

Jackson

NORTH CAROLINA

Charlotte
Raleigh

OKLAHOMA

Oklahoma City

SOUTH CAROLINA

Columbia

TENNESSEE

Nashville

TEXAS

Dallas/Fort Worth
Gatesville/Fort Hood
Houston
Kerrville
Lubbock
San Antonio/Austin
Westlake

UTAH

Salt Lake City



CONSULTING & COMPLIANCE

- Phase I/II Environmental Site Assessments
- Environmental Compliance Audits
- Pollution Liability Insurance Assistance
- Brownfield Redevelopment Support
- Comprehensive Due Diligence Services
- Stormwater Management /NPDES
- Spill Prevention Control & Countermeasures (SPCC) Response Plans
- Remedial Design Services
- Environmental Permitting
- Air Permitting & Compliance
- Monthly/Annual Compliance Inspections
- State Reimbursement Program Support

SURFACE & SUBSURFACE

- Soil and Groundwater Assessments/Sampling
- Air/Soil/Water Sampling
- PFAS Sampling, Remediation, and Disposal
- Above/Underground Storage Tank (AST/UST) Closure Assessment
- Remedial System Construction
- Remedial System Operation & Maintenance
- Mobile Remedial Trailer Rentals
- Soil Source Removal
- Environmental Drilling
- In-Situ Injection Remediation
- Vac Truck Services
- Emergency Response

FACILITIES & INFRASTRUCTURE

- Asbestos Abatement
- Lead Abatement
- Mold Remediation
- Structural Demolition
- Selective & Interior Demolition
- Chemical & Biological Decontamination
- Air Duct Cleaning
- Indoor Air Quality Services
- Bridge Painting & Overcoat Systems
- Industrial Facility Painting
- Surface Cleaning & Restoration
- Above/Underground Storage Tank (AST/UST) Construction Services
- Tank Cleaning Services
- Waste Characterization/Management
- Dewatering
- Fuel Quality Sampling & Analysis
- Fuel Cleaning/Restoration Services
- Disaster Response & Support

AT A GLANCE

Qualified to Work in **39 States**

2025 EMR of **0.82**

1000+ Employees Across All Brands

100,000+ Projects Completed

NAICS Codes:

238320, 238910, 238912, 238990, 325413, 541330, 541360, 541380, 541620, 561790, 562211, 562219, 562910, 562998



Contact Us Today for All Your Environmental Service Solutions.

(888) 347-3060
ContactUs@EISHoldings.com

1301 Solana Blvd., Building 2, Suite 2550
Westlake, TX 76262

EIS Emergency Line: (888) 347-6690

*Not all services provided in all regions.

With over **100,000 projects completed** across the **United States**, the **EIS national presence** offers a geographical span and breadth of experience that's **unrivaled in the industry.** REV20260623

WHY CHOOSE US?

Nationwide Expertise, Regional Management, Tailored for Your Needs

Our team of licensed engineers, geologists, contractors, and specialists leverages extensive experience to meet your environmental compliance and remediation needs with **precision and safety**. As part of one of the largest environmental and infrastructure service providers in the United States, EIS delivers comprehensive solutions, from environmental consulting and compliance to full-scale decontamination and specialty infrastructure work. Our integrated approach ensures tailored, compliant solutions for both **public and private sector clients** nationwide.

EIS's extensive service catalog is strategically divided into three main categories: Consulting & Compliance, Surface & Subsurface, and Facilities & Infrastructure.

Our **Consulting & Compliance** services encompass expert environmental consulting, regulatory compliance support, and tailored project management.

Surface & Subsurface solutions include thorough soil and groundwater assessments, AST/UST closures and removals, contaminated soil excavation, and the construction and operation of both mobile and stationary remedial systems, all designed to help our clients efficiently manage and resolve complex contamination challenges.

Our **Facilities & Infrastructure** category highlights our capabilities to provide a full range of contracting services related to abatement, indoor air quality, selective and structural demolition, as well as specialized and often regulated facility maintenance services, which include the application of protective coatings on industrial structures as well as road and railroad bridges, and the installation of UST and similar systems.

These services are supported by our **in-house fleet of heavy equipment** and a skilled team capable of self-performing projects nationwide. With **over 1,200 field and office personnel**, EIS delivers these services with **efficiency and precision**, meeting the needs of clients across the United States.



SAFETY

- **Excellent EMR**
- **ISNET** Approved
- **Avetta** Approved
- **E-Rail** Certified
- **Full-Time Safety Manager** in each regional office.



CONSULTING & COMPLIANCE SERVICES

Your Go-To Partner for Precision and Peace of Mind

Navigating environmental compliance and risk management can be complex and demanding. That's why we provide comprehensive **Consulting & Compliance** services tailored to meet the needs of commercial property owners, developers, financial institutions, government agencies, medical facilities, industrial operators, attorneys, and real estate lenders.

CONSULTING & COMPLIANCE

- Phase I/II Environmental Site Assessments
- Environmental Compliance Audits
- Pollution Liability Insurance Assistance
- Brownfield Redevelopment Support
- Comprehensive Due Diligence Services
- Stormwater Management /NPDES
- Spill Prevention Control & Countermeasures (SPCC) Response Plans
- Remedial Design Services
- Environmental Permitting
- Air Permitting & Compliance
- Monthly/Annual Compliance Inspections
- State Reimbursement Program Support

Our dedication to clients transcends transactional interactions. We pride ourselves on being proactive problem solvers who not only address current challenges but also anticipate and plan for future needs. Partnering with EIS means gaining experienced professionals who truly integrate with your team, providing not just regulatory compliance solutions, but strategic insights that **align with your goals and ensure your peace of mind**. Our commitment is to be more than consultants; we are invested partners dedicated to **helping your business thrive**, today and tomorrow.



REV20260623

SURFACE & SUBSURFACE SERVICES

From Soil to Water: Addressing Environmental Challenges

We recognize that effective **surface and subsurface environmental management** is essential to maintaining safe and sustainable operations. With extensive experience ranging from small contamination assessments to large-scale Superfund site investigations, our skilled team is equipped to handle comprehensive site investigations, soil sampling, contaminant delineation, site characterization, and analysis. Our clients can trust us to navigate the complexities of remediation with precision and care.

CUSTOMIZED ENVIRONMENTAL SERVICES THAT DELIVER RESULTS

- Soil and Groundwater Assessments/Sampling
- Air/Soil/Water Sampling
- PFAS Sampling, Remediation, and Disposal
- Above/Underground Storage Tank (AST/UST) Closure Assessment
- Remedial System Construction
- Remedial System Operation & Maintenance
- Mobile Remedial Trailer Rentals
- Soil Source Removal
- Environmental Drilling
- In-Situ Injection Remediation
- Vac Truck Services
- Emergency Response

EIS' remediation services are **tailored to address a wide range of needs**, from natural disaster response to site decontamination and redevelopment. When managing contaminated soil and water, we **prioritize compliance and safety** at every step. The EIS team follows all state and federal regulations while working with reliable, registered waste transporters to ensure secure transportation and disposal. Our team meticulously handles all required documentation, including waste profiles and manifests, so you have complete and accurate records for peace of mind. With our **in-house fleet of heavy equipment**, we take full control of excavation and loading, making the process seamless and efficient. Our network of vendor partners ensures that any contaminated soil removed is thoroughly screened and treated before proper disposal, safeguarding both the environment and your project's integrity.

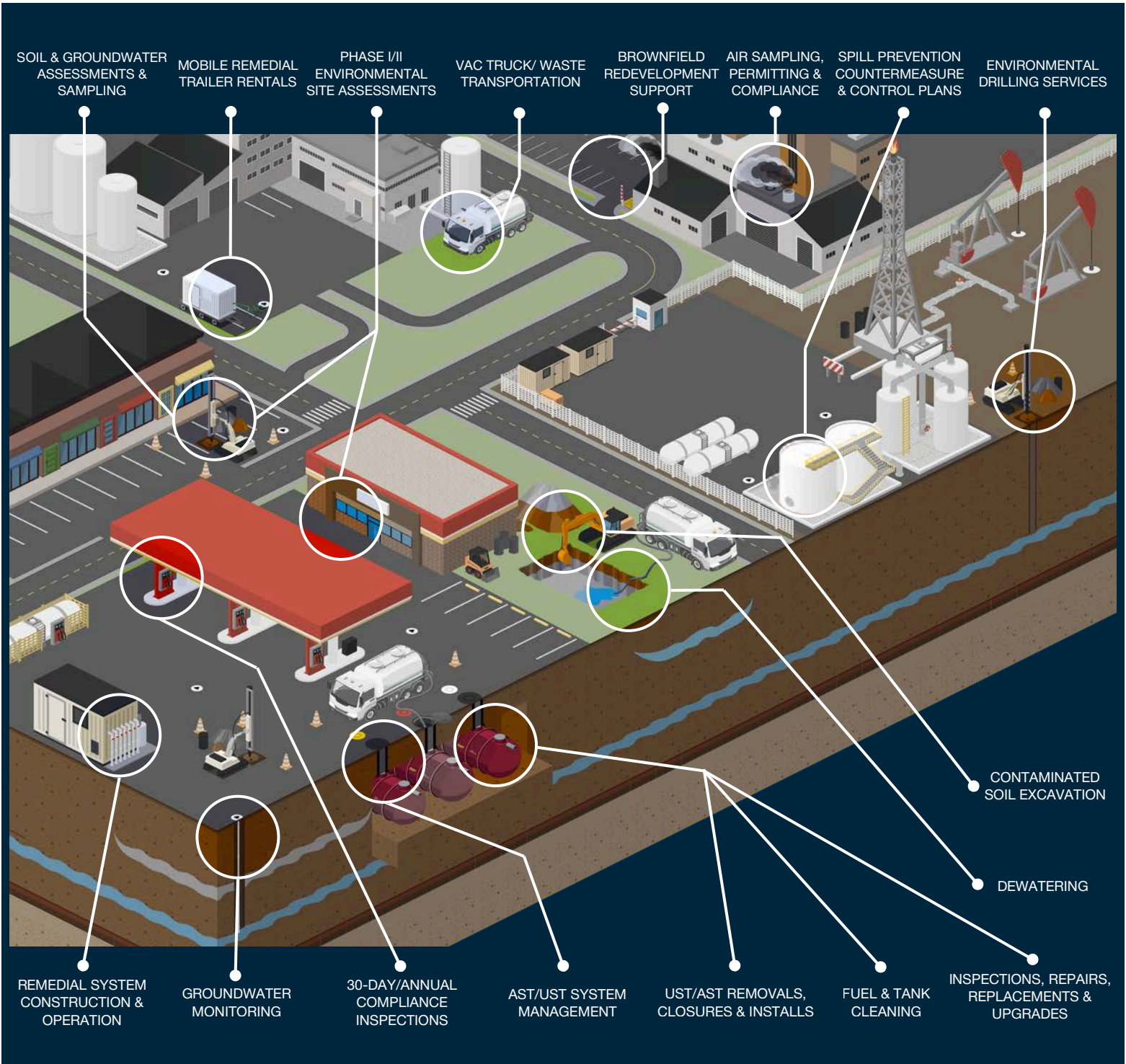
YOUR TRUSTED PARTNER

Our commitment extends beyond delivering services—we are dedicated to being trusted partners, providing comprehensive, turnkey environmental solutions that prioritize safety, compliance, and your project's success.



CONSULTING & COMPLIANCE AND SURFACE & SUBSURFACE

At EIS, we provide industry-leading expertise through our Consulting & Compliance and Surface & Subsurface service lines, offering comprehensive solutions to meet the evolving environmental and remediation needs of our clients. Whether navigating complex regulatory requirements or addressing contamination challenges, our team delivers tailored strategies and innovative technologies to ensure every project is handled with precision, efficiency, and safety.



FACILITIES & INFRASTRUCTURE SERVICES

Transforming Sites with Expert Abatement, Demolition & Recoating

We ensure your **facilities and infrastructure** projects are managed with precision and safety. Our certified Project Managers and Technicians conduct comprehensive reviews of environmental surveys, project plans and project specifications prior to starting each project. At EIS, we understand the complexities and compliance processes to execute successful demolition, asbestos abatement, lead abatement, mold remediation and other specialty indoor air quality and hazardous decontamination projects. Our team works with owners, consultants and regulators alike to ensure that projects are performed within the regulations and per the project's scope of work, budget and time frame. Each project is unique, and we have **staff with decades of experience** on a national level in diverse facilities, including schools, military facilities, governmental buildings, industrial complexes and on bridges.

FACILITIES & INFRASTRUCTURE

- Asbestos Abatement
- Lead Abatement
- Mold Remediation
- Structural Demolition
- Selective & Interior Demolition
- Chemical & Biological Decontamination
- Air Duct Cleaning
- Indoor Air Quality Services
- Bridge Painting & Overcoat Systems
- Industrial Facility Painting
- Surface Cleaning & Restoration
- Above/Underground Storage Tank (AST/UST) Construction Services
- Tank Cleaning Services
- Waste Characterization/Management
- Dewatering
- Fuel Quality Sampling & Analysis
- Fuel Cleaning/Restoration Services
- Disaster Response & Support

EIS holds **Structural and Class A Demolition Licenses** and self-perform all aspects of demolition with an **in-house fleet** and adaptable teams. Whether for planned projects or emergency responses following disasters, fires, or structural failures, we deliver **safe turnkey demolition solutions** that neutralize risks and keep projects on track.

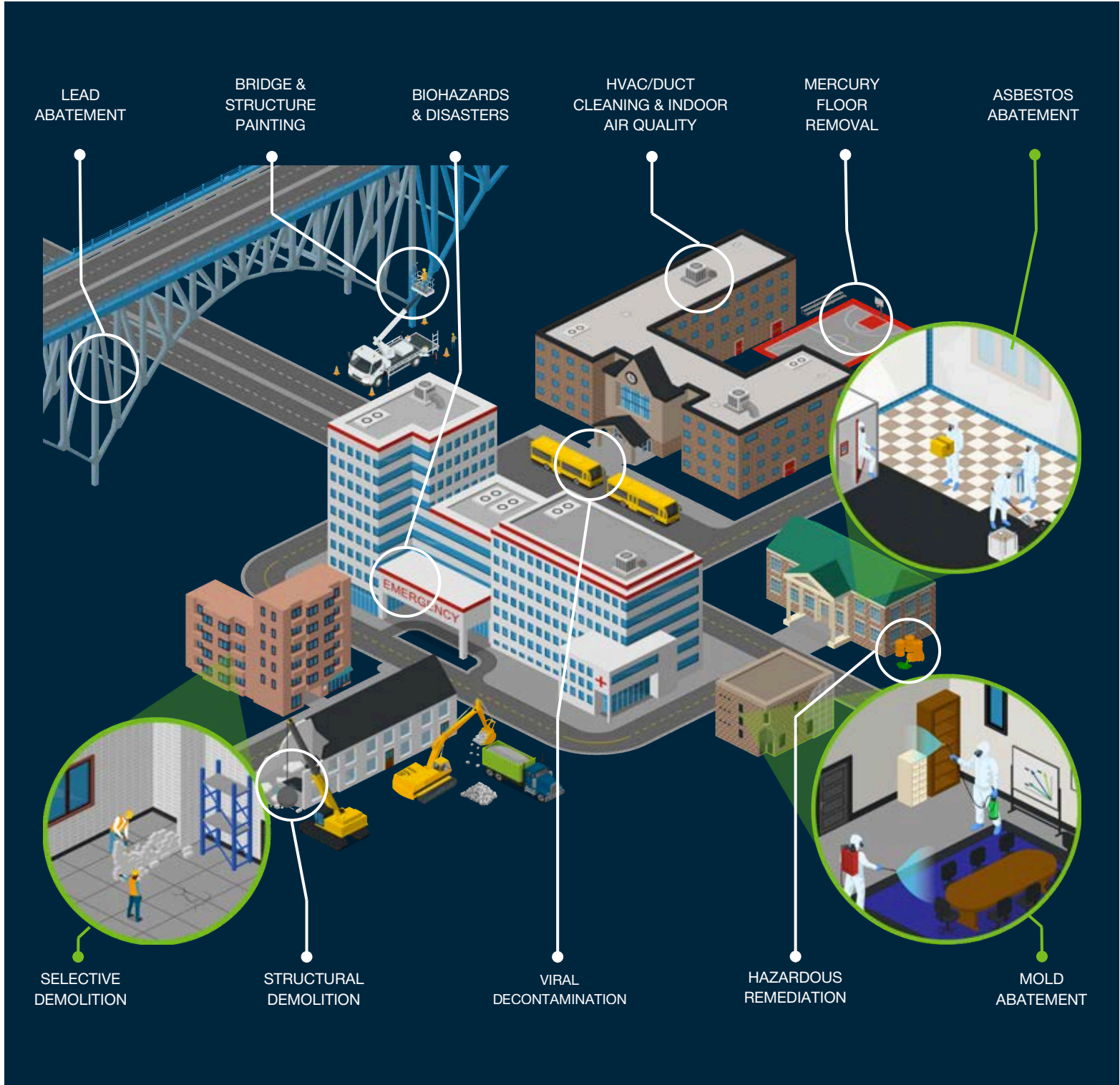
We have a dedicated division for recoating and painting bridges and structures that possesses the required **AMPP/SSPC QP-1 and QP-2 accreditations**. These difficult to possess credentials, typically required by federal and state Departments of Transportation, allow us to not only remove hazardous coating from highway and railroad bridges, but also coat and overcoat them.

EIS is your trusted partner for facilities and infrastructure services, ensuring seamless project execution from start to finish.



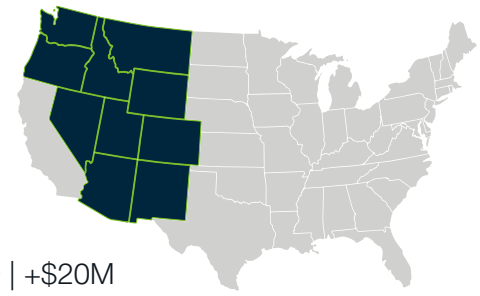
FACILITIES & INFRASTRUCTURE

EIS specializes in delivering comprehensive Facilities & Infrastructure solutions designed to meet the demands of diverse and highly regulated environments. From abatement and indoor air quality management to selective demolition and protective coatings, our expertise ensures safe, efficient, and high-quality results. Supported by a nationwide fleet of heavy equipment and a team of skilled professionals, EIS tackles projects of all sizes with precision and care.



KEY PROJECTS

Mountain Region



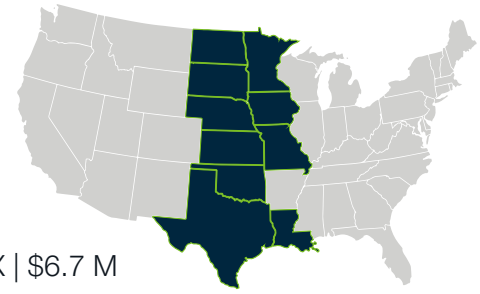
- Burlington Northern Santa Fe** (Asbestos Abatement) Nationwide | \$10 M
- EVRAZ Wire Mill Fire Cleanup** (Abatement, Demolition, & Spill Cleanup) Pueblo, CO | +\$20M
- Denver International Airport** (Mold, Sand, Grease, & Water Trap Cleanup) Denver, CO +\$4M
- RTD Eagle P3 Lightrail Corridor** (Turnkey Abatement, Demolition, & Remediation) Denver, CO | \$16.7 M
- Former Stapleton International Airport** (Turnkey Abatement, Demolition, & Remediation) Denver, CO | +\$25M
- The Downing Reservoir** (Soil Remediation) Federal Center, Lakewood, CO | \$14.9 M
- Sheridan VA Medical Center** (Asbestos Abatement & Biohazard Remediation) Sheridan, WY | \$715 K
- University of Colorado, Denver** (Soil Remediation) Denver, CO | \$4 M
- Union Pacific Rail Road** (Asbestos Abatement) Nationwide | \$7.5 M
- Tin Can Alley** (Clean up Hazardous Waste) Grey Bull, WY | \$1.2 M
- York Canyon Mine Facilities** (Salvage Removal of Recyclables) NM | \$2 M
- Former Bradley Petroleum Location** (Remedial Technology Services, Soil Excavation & Groundwater Sampling) CO | \$3.27 M
- Everyday Stores** (Remedial Technology Services, Groundwater Sampling & Reporting) CO | \$1.2 M
- Former Sav-O-Mat** (Site Characterization, Soil Vapor Monitoring, Air Sparging Soil Vapor Extraction, & UST Removal) CO | \$4.3 M
- Rio Grande River Gorge Bridge** (Lead Abatement & Steel Encapsulation) Taos, NM | \$200 K

REV20260623



KEY PROJECTS

Central Region



USPS (Mold Remediation and Asbestos Abatement) Lake Charles, LA | \$836 K

Texas Dept. of Transportation BMPO (Asbestos Abatement on Various Bridges) TX | \$6.7 M

TXDOT IH35 Managed Lanes (Asbestos & Lead Based Paint Abatement) Dallas, TX | \$4.7 M

Dallas County George Allen Courts (Asbestos & Lead Based Paint Abatement) Dallas, TX | \$2.38 M

Corpus Christi Naval Air Station (Powertrain Abatement) Corpus Christi, TX | \$1.27 M

Cox Business Center (Asbestos Abatement) Tulsa, OK | \$1.3 M

2024 Natural Disaster Support (Disaster Response, Debris Collection & Recycling, & Waste Management) IA | +\$5 M

Fort Calhoun Station (Asbestos Abatement) Blair, NE | \$2 M

DICO Superfund Site (Asbestos & Lead Abatement, PCB's, Demolition) Des Moines, IA | +\$2 M

Jones Street Power Station (Asbestos Abatement) Omaha, NE | \$2 M

Lake Charles Main Post Office (Emergency Asbestos Abatement) Lake Charles, LA | \$2.9 M

Tivoli Place Apartments (Asbestos, Lead, Mold Abatement & Interior Demo) New Orleans, LA | \$2.2 M

Deridder Probation and Parole Building (Asbestos Abatement & Structural Demolition) Deridder, LA | \$1.4 M

Rigolets CSX Swing Span Railroad Bridge (Asbestos & Lead Abatement & Painting) Slidell, LA | \$1.9 M

Texas Department of Transportation Llano River Bridge (Lead Abatement & Painting) Mason, TX | \$250 K

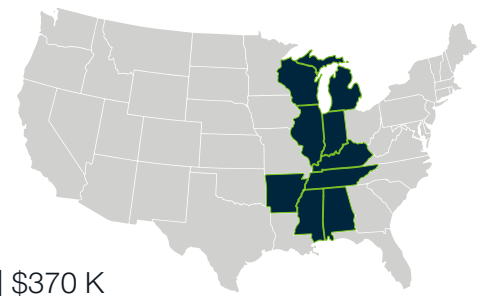
Addison Airport Tunnel (Coating Removal & Recoating) Addison, TX | \$600 K

REV20260623



KEY PROJECTS

Midwest Region



Metropolitan Housing Alliance (Asbestos Abatement) Little Rock, AR | \$2.3 M

Arkansas Nuclear One - Entergy Arkansas (Asbestos Abatement) Russellville, AR | \$370 K

Armada Perkasa (Asbestos Abatement) Lagos, Nigeria | \$500 K

Regions Bank Building (Asbestos Abatement) Hot Springs, AR | \$1 M

100 N Main Building (Selective Interior Demolition, Asbestos Abatement, Lead Paint Stabilization) Memphis, TN | \$7 M

NASA Marshall Space Flight Center Building (Asbestos Abatement, Interior Demolition & Waste Management) Huntsville, AL | \$3.6 M

Union Pacific Railroad (Asbestos Abatement) North Little Rock, AR | \$477 K

Pine Bluff Arsenal (Pipeline Coating Abatement) | Pine Bluff, AR | \$1 M

University of Pine Bluff (Asbestos Abatement) Pine Bluff, AR | \$1.2 M

30 Crossing Bridge and Highway Interchange (Asbestos & Lead Abatement) Little Rock, AR | \$400 K

Stennis Space Center Building 9101 (Lead Abatement & Overcoating) Stennis Space Center, MS | \$1.2 M

Cooper Tire & Rubber Company (Disaster Response & Asbestos Abatement) Tupelo, MS | \$1 M

64 Corner Store (Underground Storage Tank Removal) Alma, AR | \$806 K

University of Arkansas for Medical Sciences, Barton Building (Interior Demolition) Little Rock, AR | \$ 700 K

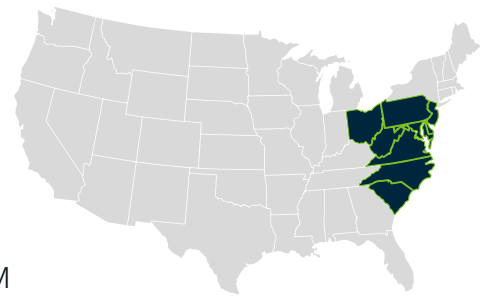
GV (Sonny) Montgomery VA Medical Center (Interior Demolition) Jackson, MS | \$486 K

REV20260623



KEY PROJECTS

Mid-Atlantic Region



Hotel Louise (Asbestos & Lead Based Paint Abatement) Washington, NC | \$518 K

Johnston Building (Asbestos Abatement & Interior Demolition) Charlotte, NC | \$3.7 M

Smithsonian National Air & Space Museum (Abatement & Demolition) Washington, D.C. | \$7.5 M

Martin Luther King, Jr. Memorial Library (Abatement & Demolition) Washington, D.C. | \$9.7 M

Intelligence Community Campus (Abatement & Demolition) Bethesda, MD | \$7.8 M

Duke Ellington School for the Arts (Abatement & Demolition) Washington, D.C. | \$4.8 M

Residences at St. Elizabeth's East (Abatement & Demolition) Washington, D.C. | \$3.3 M

Museum of the American Educator (Abatement & Demolition) Washington, D.C. | \$3.4 M

University of North Carolina Carrington Hall (Asbestos Abatement & Interior Demolition) Chapel Hill, NC | \$1.6 M

YMCA of Greater Richmond (Asbestos Abatement & Interior Demolition) Richmond, VA | \$891 K

Boviet Solar (Interior Demolition) Greenville, NC | \$870 K

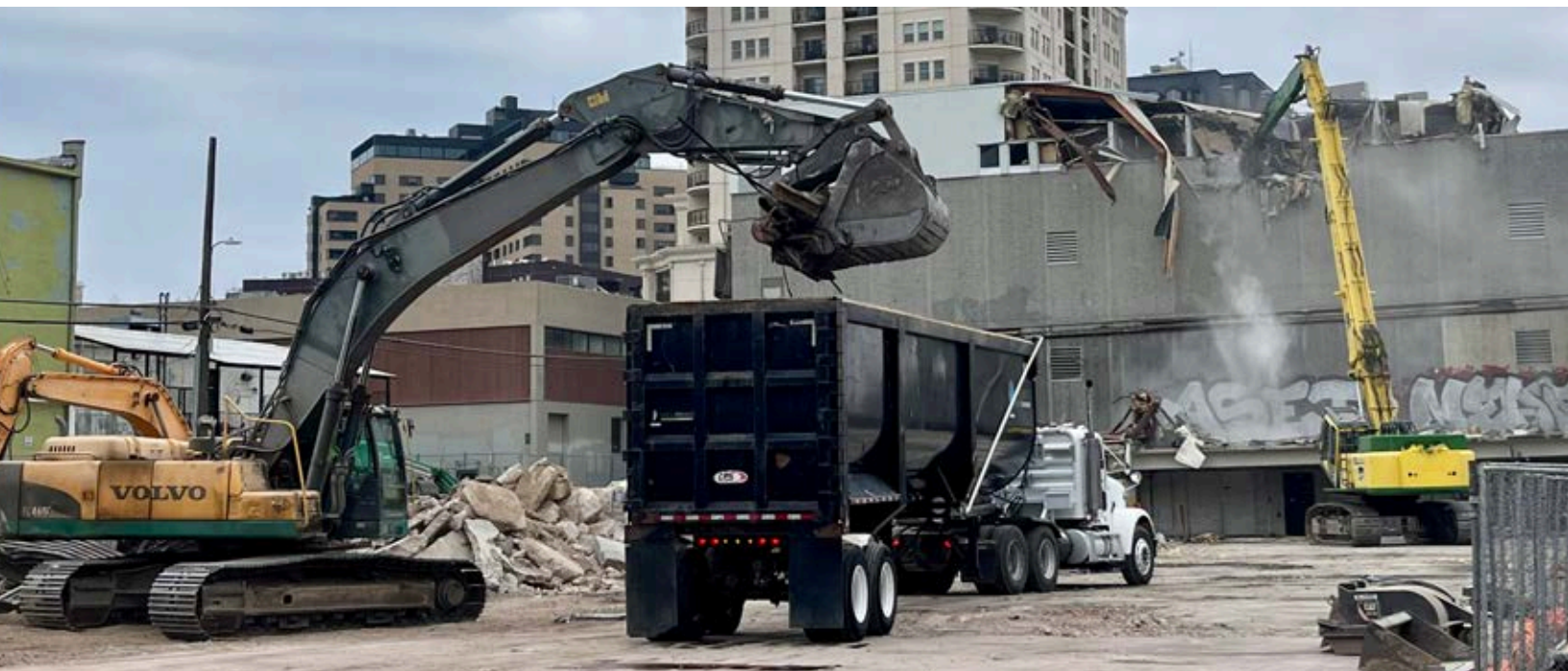
Rocky Mount Housing Authority (Lead Abatement) Rocky Mount, NC | \$435 K

Alliance Renovation (Asbestos Abatement & Interior Demolition) Dunn, NC | \$864 K

Housing Authority of the City of Charleston, Kiawah Homes (Asbestos Abatement & Interior Demolition) Charleston, SC | \$726 K

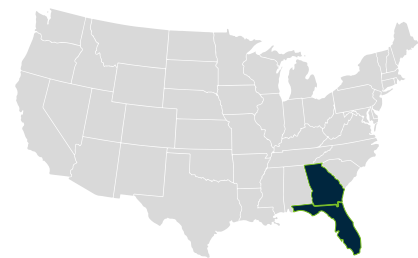
Marine Corps Recruit Depot Parris Island (Asbestos Abatement & Demolition) Port Royal, SC | \$ 261 K

REV20260623



KEY PROJECTS

Southeast



- University of West Florida** (Asbestos Abatement) Pensacola, FL | \$900 K
- Florida Dept. of Environmental Protection** (Site Assessment/Remediation) Florida | \$41 M
- Circle K Stores, Inc.** (AST/UST Construction Services, Site Assessment/Remediation, Fuel Cleaning, Tank Cleaning) FL & GA | \$10.5 M
- Petro South, Inc.** (Fuel System Repairs, Site Assessment/Remediation) Florida and Georgia | \$3 M
- Covanta Fire** (Demolition & Asbestos Abatement) Doral, FL | +\$9 M
- USPS Distribution Facility PH 1** (Asbestos Abatement) Jacksonville, FL | \$1.7 M
- Ft. Moore Army Barracks** (Asbestos Abatement) Columbus, GA | \$1.6 M
- Ft. Benning Barracks** (Asbestos Abatement) Columbus, GA | \$1.5 M
- Archer Daniels Midland** (Emergency Response, Vac Truck Services, Tank Cleaning) GA | \$5.3 M
- Messer House at San Luis Mission** (Lead Abatement) Tallahassee, FL | \$880 K
- Tallahassee Memorial Hospital** (Asbestos Abatement & Interior Demolition) Tallahassee, FL | \$ 800 K
- Florida's State Capitol Building** (Asbestos Abatement, Duct Cleaning & Interior Demolition) Tallahassee, FL | \$7.5 M
- Casa Blanca Vacation Rentals** (Disaster Response & Asbestos Abatement) Sarasota, FL | \$570 K
- Olam** (Emergency Response, Vac Truck Services) GA | \$230 K
- Anna Maria Elementary School** (Disaster Response, Mold Abatement, Reconstruction & Duct Cleaning) Holmes Beach, FL | \$477 K

REV20260623

