



NATIONWIDE REACH
WORLD-CLASS SOLUTIONS

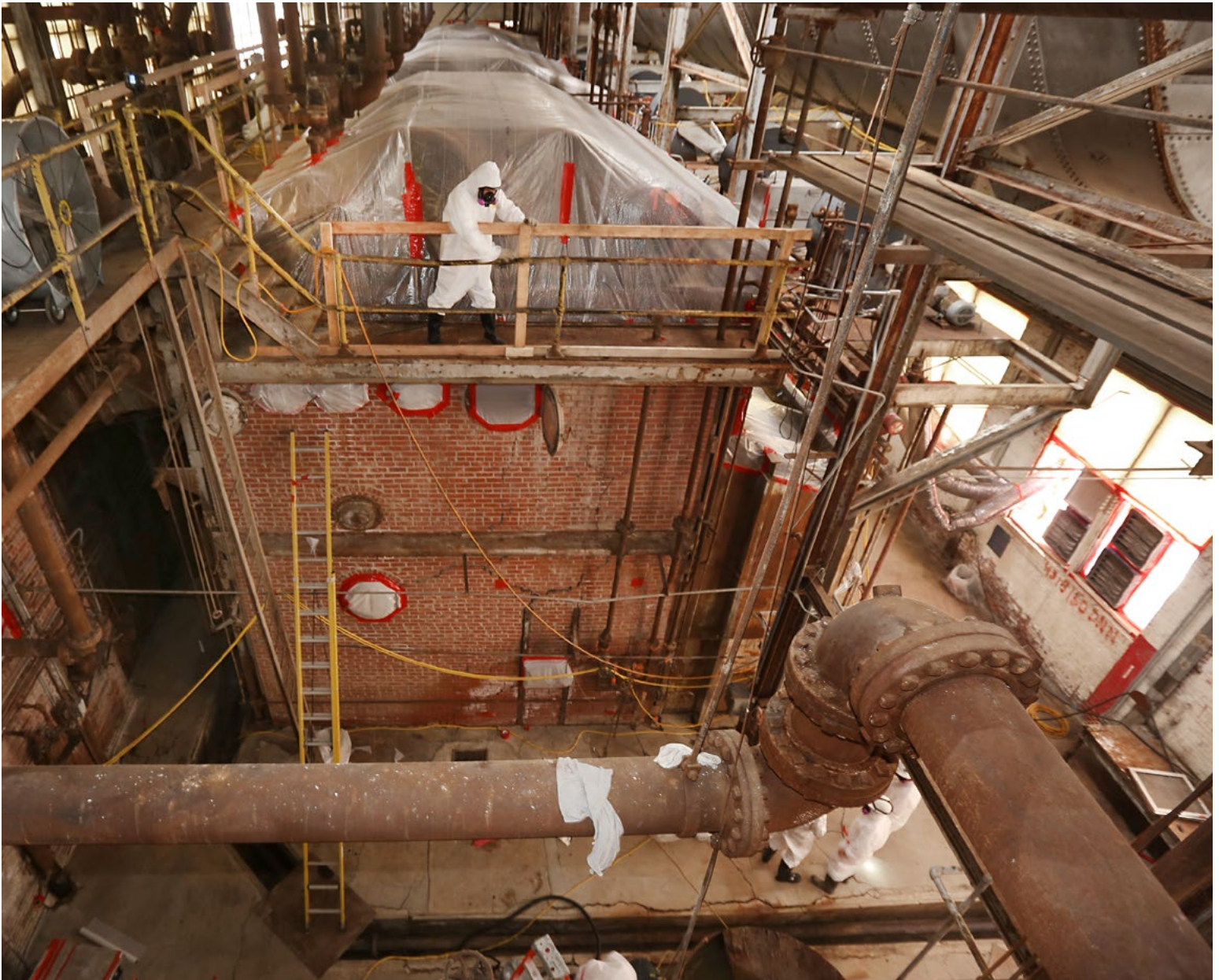
Regional connections allow us to work seamlessly for clients across the country.

TURNKEY ABATEMENT DEMOLITION AND REMEDIATION

NATIONAL FOOTPRINT
SERVING 34 STATES

#1 U.S. ABATEMENT
FIRM - 2022

OUTSTANDING SAFETY
RECORD



Regional connections allow us to work seamlessly for clients across the country.

With over 1,000 employees, EIS Holdings performs a full suite of abatement, decontamination, remediation and other environmental and specialty infrastructure services across the United States. Our combination of companies creates one of the nation's largest provider of environmental and infrastructure services in the United States, serving a wide variety of public and private end markets. Our \$10 million insurance policy, \$60 million bonding capacity, and excellent safety record ensures our clients get the highest qualified company on both small and large scale projects.



\$10M
INSURANCE POLICY



\$60M
BONDING CAPACITY

THE EIS FAMILY OF COMPANIES



6700 E 50th Avenue
Commerce City, CO 80022
(303) 991-1280



8000 West 44th Avenue
Wheat Ridge, CO 80033
(303) 433-0479



4028 Daley Avenue
Fort Worth, TX 76180
(817) 595-0790
24 Hour Emergency:
(866) 595-0790



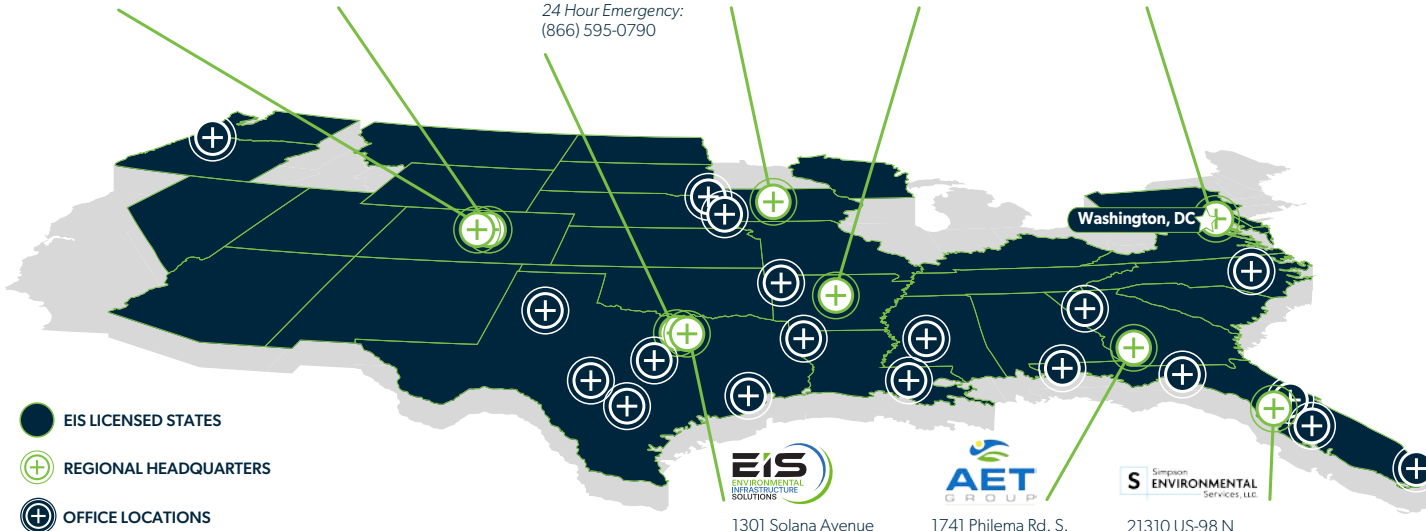
1901 Easton Boulevard
Des Moines, IA 50316
(515) 284-0401



7705 Northshore Place
North Little Rock, AR 72118
(888) 353-2080



8309A Sherwick Court
Jessup, MD 20794
(800) 328-8860



1301 Solana Avenue
Fort Worth, TX 76262
(888) 347-3060



1741 Philema Rd. S.
Albany, GA 31701
(800) 989-8298



21310 US-98 N
Trilby, FL 33593
(352) 583-2509

EIS OFFICE LOCATIONS

ARKANSAS

Bentonville
Little Rock

COLORADO

Denver
Wheat Ridge

FLORIDA

Trilby
Miami
Orlando
Tallahassee
Pensacola
Tampa

GEORGIA

Albany
Atlanta
Warner Robins
Valdosta

IOWA

Des Moines

LOUISIANA

Baton Rouge
Shreveport

MISSISSIPPI

Jackson

NEBRASKA

Omaha

NORTH CAROLINA

Raleigh

OKLAHOMA

Oklahoma City

OREGON

Portland

SOUTH DAKOTA

North Sioux City

TEXAS

Fort Worth
Gatesville/Fort Hood
Houston
Kerrville
Lubbock
San Antonio/Austin

WASHINGTON, DC

Jessup, MD

WHY CHOOSE US?

OWNERSHIP IN THE INDUSTRY SINCE 1985

THE EIS VALUE PROPOSITION

EIS and our family of companies provides a full range of environmental solutions to some of the country's largest companies and government agencies. Maintaining licenses and certifications in 34 states, we have the capacity to take on projects from the local level to those national in scope from Florida to the Pacific Northwest. We are well positioned to handle projects of any size, and together we have successfully completed over 40,000 projects ranging in size from \$5,000 to over \$20 million with combined revenues of over \$177 million. In addition, our \$10 million insurance policy, \$60 million bonding capacity, and excellent safety record ensures our clients receive the highest qualified company on both small and large-scale projects.

OUR FAMILY OF COMPANIES



SAFETY

- Excellent EMR
- ISNET approved
- Avetta approved
- E-rail certified
- Full-time safety director in each regional office

BONDING

- Aggregate bonding limit: \$60 million
- We have bonded single projects in excess of \$20 million.

INSURANCE

- Our general liability coverage for \$10 million includes pollution coverage

ACCOLADES

- Named #1 abatement firm (ENR) in 2022
- National Award Winner for Environmental Excellence: National Demolition Association
- Small Business of the Year: The Society of American Military Engineers (SAME)

COMPREHENSIVE ENVIRONMENTAL SERVICE SOLUTIONS THAT WORK FOR YOU.

- Soil Remediation
- Water Remediation
- Site Assessments
- Environmental Consulting
- Interior Demolition
- Full-Scale Demolition
- Asbestos Abatement
- Lead Abatement
- Mold Remediation
- Air Duct Cleaning
- Emergency Response
- Coating & Bridge Painting
- Waste Transportation



CLIENT SATISFACTION

"They are an extension of our company in many cases, and their reputation and professionalism are a reflection on my company."

EEG

"Guys on site were very organized and maintained a prompt schedule to meet our timeline."

C.W. Wright Construction

"They are very professional, timely, and have always worked well with us."

Milestone Construction

"For over a decade, they have performed over \$20 million in demolition, abatement and soils remediation as part of the Stapleton Redevelopment Project. This team has not only shown an ability to be cost competitive, they have safely performed large-scale demolition, abatement, and remediation often with an aggressive schedule."

Gregory A. Holt
City and County of Denver

"Due to the team's professionalism, compliance history, and safety record, coupled with extremely competitive pricing, I am confident that both my company and my clients are well served."

Chris Tolar, Bowman Engineering

"This team has had an Annual Structure Removal Contract with the City of Des Moines for the last 2 years. I have never had less than a good experience working with them as they have always completed the projects in a safe manner and on schedule. "

Doug Olson, City of Des Moines

"I have been completely satisfied with the service they have provided on each of these abatement projects."

Dave Smith
Howard County Housing Authority

"Great team effort and well done. We are very pleased and a raving fan."

Bobby Page
Watermark Development

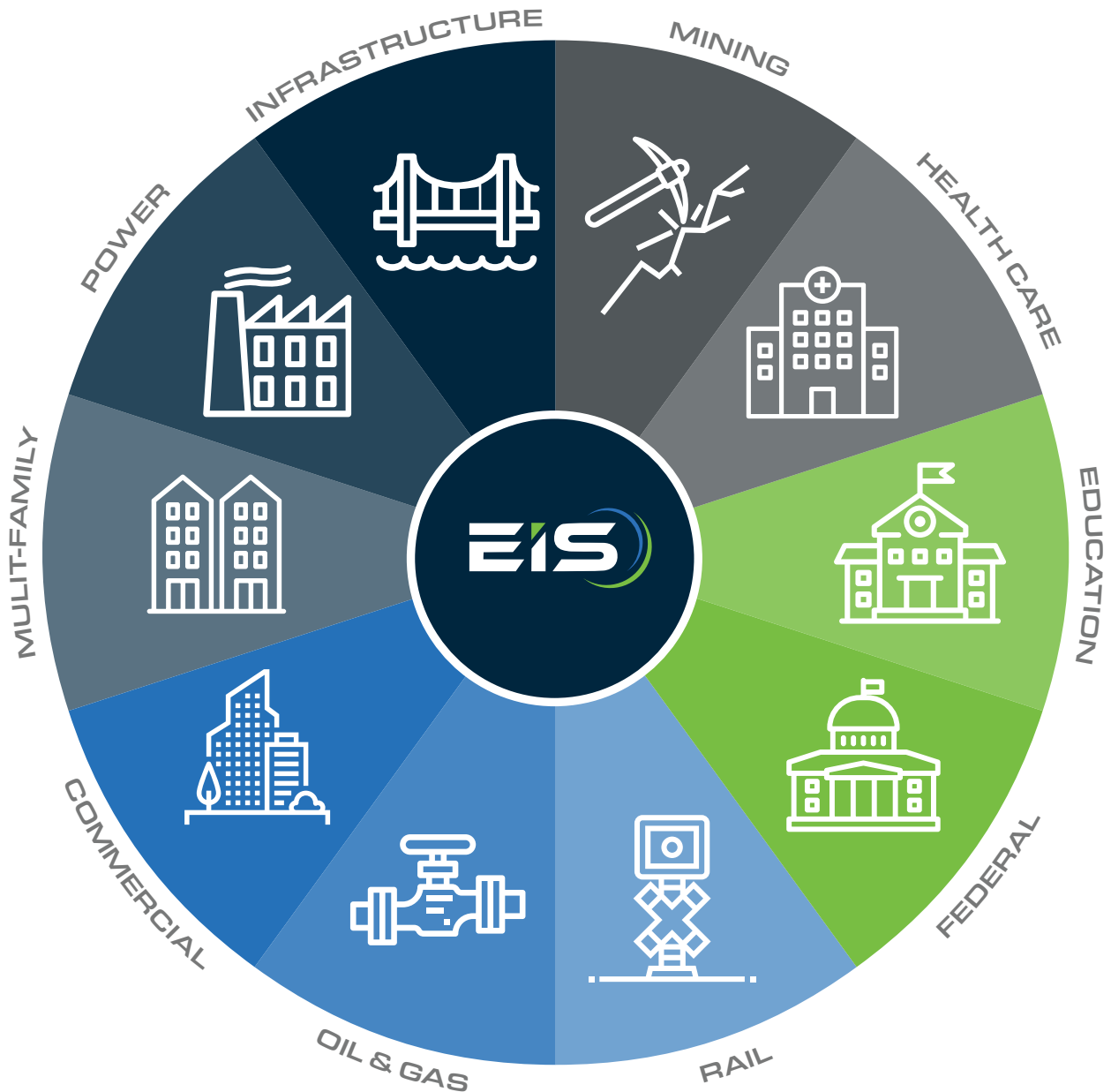


INDUSTRIES SERVED

DEPTH OF EXPERIENCE

Our experience with a broad range of building types and site infrastructure informs each project. We have encountered contaminated industrial sites, power plants, medical facilities and sensitive public buildings with aging, hazardous materials that must be removed with care.

Clients choose us because we do the work the right way, the safe way, on time, and within budget.



ASBESTOS & LEAD ABATEMENT

MOLD REMEDIATION

DUST & DEBRIS CONTAINMENT SYSTEMS

AIR DUCT CLEANING

COATING & BRIDGE PAINTING

HYDRO-BLASTING

DEMOLITION

- Full-Scale Demolition
- Interior Demolition
- Mechanical & Electrical Dismantling
- Surface Preparation
- Universal Waste Disposal

SOIL & GROUNDWATER REMEDIATION

SURFACE & SUBSURFACE INVESTIGATIONS

- Soil & Groundwater Site Assessments
- Risk Assessment
- Spill Prevention Control & Countermeasures (SPCC) Response Plans

DUE DILIGENCE & COMPLIANCE CONSULTING

- Phase I Environmental Site Assessments
- Phase II Subsurface Investigations
- Environmental Compliance Audits
- Tank Management Services
- Brownfield Redevelopment Support Services
- Legal Environmental Support Services
- Environmental Insurance Liaison
- Litigation Support
- Reimbursement Services
- Air Permitting & Compliance

EMERGENCY RESPONSE

- Natural Disaster Cleanup
- Emergency Vacuum Services
- Petroleum/Chemical Spills and Leaks

PETROLEUM FACILITY SERVICES

- Above/Below Ground Fuel Tank Design & Installation
- Inspections, Repairs, Replacements & Upgrades
- Tank Cleanings and Waste Disposal
- System Management
- Environmental Compliance Services
- Tank Removals and Closures
- Remedial Construction & Operations
- Contaminated Soil Excavation
- Remediation System Construction
- Air & Groundwater Sampling
- On-Site Soil Treatment

WASTE TRANSPORTATION

- Drums, Roll-Off Boxes
- Wet/Dry Vacuum Trucks
- Trailers
- Same-Day Emergency Services

SCALE SERVICES

- Balances
- Counting Scales
- Crane Scales
- Bench/Portable Drum Fillers
- Forklift Scales
- Hydrostatic Scales
- In-Motion Checkweighers
- Rail Scales
- Tank & Hopper Scales
- Custom Scale Tickets
- Maintenance & Calibrations
- Rentals

BIOLOGICAL WASTE REMOVAL & DISPOSAL

BIOHAZARD & CHEMICAL DECONTAMINATION

MIGRATORY BIRD DETERRENT & REPELLENT SERVICES

"Their impressive safety record assisted in the contract award and was proven on our project site."

Tom Warner
Denver Transit Partners



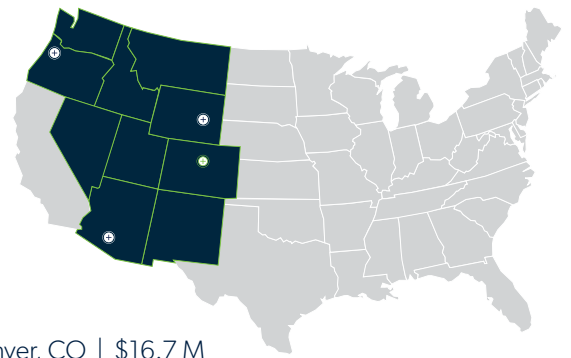
With over **40,000 projects completed** across **34 states**, the **EIS national presence** offers a geographical span and breadth of experience that's **unrivaled in the industry.**

KEY PROJECTS

ROCKY MOUNTAINS



EARTH SERVICES
& ABATEMENT

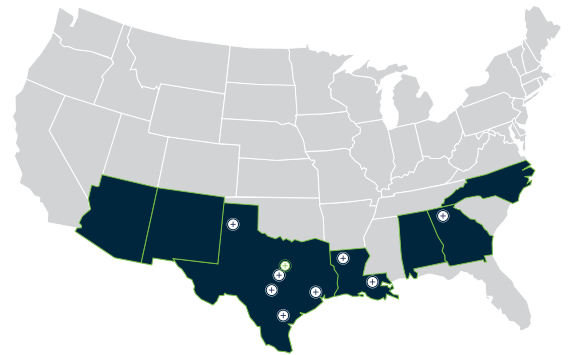


- RTD Eagle P3 Lightrail Corridor** (Turnkey Abatement, Demolition, Remediation) Denver, CO | \$16.7 M
- Former Stapleton International Airport** (Turnkey Abatement, Demolition, Remediation) Denver, CO | +\$25 M
- Oriental Refinery Decommissioning** (Turnkey Abatement, Demolition, Remediation) Alamosa, CO | \$6.7 M
- The Downing Reservoir** (Soil Remediation) Federal Center, Lakewood, CO | \$14.9 M
- Burlington Northern Santa Fe** (Asbestos Abatement) Nationwide | \$10 M
- NORAD** (Lead abatement) Cheyenne Mountain, CO | \$1 M
- Xcel Energy Denver Terminal** (Abatement & Hazardous Waste Cleanup) Denver, CO | \$1 M
- FE Warren AFB** (Abatement) Cheyenne, WY | \$700 K
- Cherokee Power Plant, Xcel Energy** (Soil Remediation) Denver, CO | \$780 K
- University of Wyoming Hoyt Hall** (Abatement) Cheyenne, WY | \$550 K
- University of Colorado, Denver** (Soil Remediation) CO | \$4 M
- Globeville Outfall Landing** (Soil Remediation) Denver, CO | \$3.6 M
- The Standard** (Asbestos Abatement and Demolition) Ft. Collins, CO | \$1.95 M
- Amalgamated Sugar Factory** (Asbestos and Demolition) Ovid, CO | \$3.3 M
- 32nd & Syracuse Stone House Farms** (Asbestos Abatement & Demo) Denver, CO | \$2.98 M
- CU Boulder College Inn Decommissioning** (Demolition and Asbestos) Boulder, CO | \$1.45 M
- Union Pacific Rail Road** (Asbestos Abatement) Multiple Sites Nationwide | \$7.5 M
- Tin Can Alley** (Clean up Hazardous Waste) Grey Bull, WY | \$1.2 M
- Lake County High School** (Asbestos Abatement and Demolition) Leadville, CO | \$1 M
- North Westerly Creek Asbestos** (Abatement & Soil Remediation) Denver, CO | \$790 K
- Stapleton DIA Highline Canal** (Soil Remediation) Denver, CO | \$2.4 M
- Flak Jacket** (Formaldehyde Containing) Denver, CO | \$2.1 M
- Fort Huachuca Medical Clinic** (Asbestos Abatement) AZ | \$400 K
- York Canyon Mine Facilities** (Salvage Removal of Recyclables) NM | \$2 M
- Montana Rail Link** (Asbestos Abatement) MT | \$600 K
- Wyodak Station** (Asbestos Abatement) Wyodak, WY | \$248 K
- Google Boulder Campus** (Abatement & Demolition) Boulder, CO | \$750 K
- Buckley AFB** (Asbestos Abatement) Aurora, CO | \$700 K



KEY PROJECTS

TEXAS & LOUISIANA

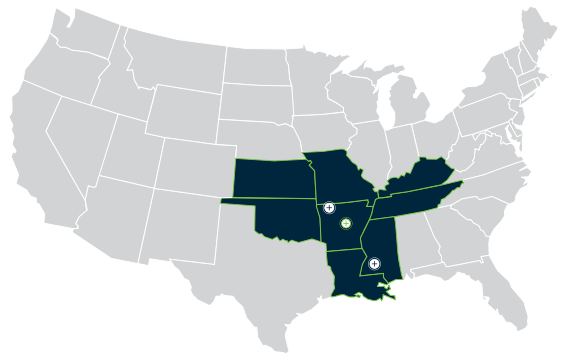


- Texas Dept of Transportation BMPO**, Austin, TX | \$6.7 M
- TXDOT IH35 Managed Lanes** (Asbestos & Lead Based Paint Abatement) Dallas, TX | \$4.7 M
- Madera Power Plant** (Equipment Match Marking and Disassembly) Lamar, CO | \$1.3 M
- U of Texas Dental & Nursing Renovations** (Asbestos Abatement) San Antonio, TX | \$2.77 M
- Texas Dept of Transportation BMPO** (Asbestos Abatement on Various Bridges)
- Bell & McLennan Counties** Waco, TX | \$2.55 M
- Dallas County George Allen Courts** (Asbestos & Lead Based Paint Abatement) Dallas, TX | \$2.38 M
- Covenant Hospital Lubbock** (Asbestos Abatement) Lubbock, TX | \$2 M
- Dallas Global Bldgs-Phase I**, Dallas, TX | \$2 M
- TXDOT US190 @ Edwards** (Asbestos Abatement) Fort Worth, TX | \$1.6 M
- Forestwood Townhomes** (Asbestos Abatement) Dallas, TX | \$1.5 M
- Corpus Christi Naval Air Station** (Powertrain Abatement) Corpus Christi, TX | \$1.27 M
- Port Arthur Housing Authority** (Mold Remediation) Port Arthur, TX | \$1.19 M
- Former Raytheon Buildings** (Asbestos Abatement) | \$1 M
- Lindy Boggs Hospital** (Asbestos and Mold) | \$982 K
- Residence Inn** (Decontamination) Houston, TX | \$923 K
- Skyline High School** (Asbestos Abatement) Dallas, TX | \$886 K
- Young Women's College Preparatory Academy** (Asbestos Abatement) Houston, TX | \$882 K
- Gates of Bluffview Apartments** (Asbestos Abatement) | \$875 K
- 1st Calvary - Change Order #1, Crawl Space** (Asbestos Abatement) | \$982 K
- Woodland Christian Tower** (Asbestos Abatement) | \$671 K
- Texas Dept of Transportation BMPO IH635** (Asbestos Abatement) Dallas, TX | \$525 K
- IH 635 WB Royal (DART & FWRR)** (Asbestos Abatement) Dallas, TX | \$525 K
- Texas Tech University** (Asbestos Abatement) Lubbock, TX | \$522 K
- South Oakcliff High School DISD Bond Program** (Asbestos Abatement) Dallas, TX | \$455 K



KEY PROJECTS

CENTRAL

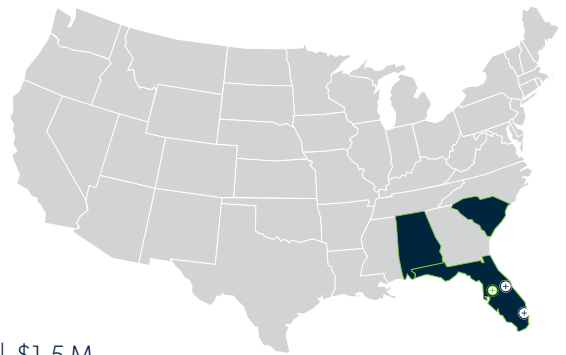


- Metropolitan Housing Alliance** (Asbestos Abatement) Little Rock, AR | \$2.3 M
- University of Arkansas** (Asbestos Abatement) Fayetteville, AR | \$1.4 M
- Cox Business Center** (Asbestos Abatement) Tulsa, OK | \$1.3 M
- University of Pine Bluff** (Asbestos Abatement) Pine Bluff, AR | \$1.1 M
- Oklahoma Air National Guard** (Asbestos & Lead Abatement) Will Rogers National Airport, Oklahoma City, OK | \$195 K
- Arkansas Nuclear One - Entergy Arkansas** (Asbestos Abatement) Russellville, AR | \$370 K
- Main Street Redevelopment** (Asbestos Abatement, Interior Demolition) Little Rock, AR | \$980 K
- Jefferson Regional Medical Center** (Asbestos Abatement) Pine Bluff, AR | \$240K
- USS HOGA** (Lead Paint Removal) North Little Rock, AR | \$150 K
- Fed Ex** (Asbestos Abatement) Memphis, TN | \$140K
- University of Pine Bluff** (Asbestos Abatement) Pine Bluff, AR | \$1.2 M
- Armada Perkasa** (Asbestos Abatement) Lagos, Nigeria | \$500 K
- Sears Store 500 S. University** (Asbestos Abatement) Little Rock, AR | \$169 K
- Majestic Hotel** (Asbestos Abatement) Hot Springs, AR | \$450 K
- University of Arkansas for Medical Sciences** (Asbestos Abatement) Little Rock, AR | \$500 K +
- Regions Bank Building** (Asbestos Abatement) Hot Springs, AR | \$1 M
- Sheridan VA Medical Center** (Asbestos Abatement, Biohazard Remediation) Sheridan, WY | \$715 K
- Union Pacific Railroad** (Asbestos Abatement) North Little Rock, AR | \$477K
- Vasco A. Smith, Jr. Admin Building** (Asbestos Abatement) Shelby County, TN | \$300K
- Pine Bluff Arsenal** (Pipeline Coating Abatement) | Pine Bluff, AR | \$1 M
- Mondi USA/Twin Rivers Paper Mill** (Asbestos Abatement, Mold Remediation) Pine Bluff, AR | \$250K
- Murphy Oil** (Asbestos Abatement) El Dorado, AR | \$225 K
- Lane Hotel** (Asbestos Abatement) Rogers, AR | \$300 K
- Garland School** (Asbestos Abatement) Little Rock, AR | \$200 K
- Fort Smith Public Schools** (Asbestos Abatement) Fort Smith, AR | \$750 K +



KEY PROJECTS

SOUTHEAST



FDOT Bridge #120083, #120084, #120102 (Asbestos Abatement) Lee County, FL | \$1.5 M

Marine Corps Logistics Base (Asbestos Removal and Demolition) Albany, GA | \$824 K

FSU Johnston Building (Asbestos Removal, Lead Paint and Mold Abatement, and Demolition) Tallahassee, FL | \$1 M

The Vinings (Mold Removal and Finish Restoration) Clearwater, FL | \$1.79 M

Pinellas Test Track Relocation (Exterior Demolition) Clearwater, FL | \$423 K

FSU Cawthon Hall (Ductwork Cleaning) Tallahassee, FL | \$90.4 K

Bank of American – Eckman Building (Ductwork Cleaning) Tampa, FL | \$220 K

North Port High School, Building 8 (Ductwork Cleaning) North Port, FL | \$70 K

Bank of America – Deer Lake (Ductwork Cleaning) Jacksonville, FL | \$101.4 K

FSU Wildwood Halls, North & South (Ductwork Cleaning) Tallahassee, FL | \$238.7 K

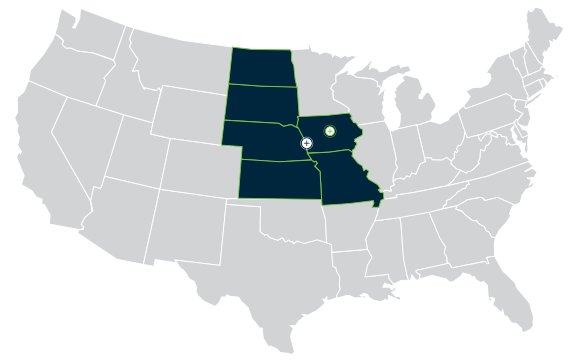
Hernando High School, Bldgs 28 & 29 (Ductwork Cleaning) Brooksville, FL | \$76 K

NAS Trumbo Point – Fly Navy Building (Ductwork Cleaning) Key West, FL | \$482.4 K



KEY PROJECTS

MIDWEST



- Tornado Damaged Industrial Complex** (Demolition) Marshalltown, IA | \$4 M
- West Central Cooperative** (Asbestos Abatement) Ralston, IA | \$351 K
- Ames Power Plant Contract-On Call** (Asbestos Abatement) Ames, IA | \$1 M+
- Fort Calhoun Station** (Asbestos Abatement) Blair, NE | \$2 M
- Randolph Hotel** (Asbestos Abatement) Des Moines, IA | \$200 K
- Iowa Veteran's Home** (Asbestos Abatement) | \$210 K
- Hard Rock Casino** (Asbestos Abatement) Sioux City, IA | \$410 K
- Havelock Railroad Yard** (Asbestos Abatement Demolition) Lincoln, NE | \$3 M
- Dimmet Hall** (Asbestos Abatement) Sioux City, IA | \$230 K
- Cargill Emergency Containment and Clean up** (Asbestos Abatement) Des Moines, IA | \$500 K
- Historic Maytag Hotel** (Abatement and Demolition) Newton, IA | \$1.2 M
- City of Des Moines** (Demolition) Des Moines, IA | \$2.3 M
- Vermeer Tornado Damage** (Abatement, Demolition) Des Moines, IA | \$800 K
- Du-Pont Pioneer Water** (Asbestos Abatement Treatment Plant) | \$484 K
- Creston** (Asbestos Abatement, Demolition) Creston, IA | \$563 K
- MCU Montana Dakota Utilities** (Asbestos Abatement) ND | \$500 K
- Sioux Falls Post Office** (Asbestos Abatement) Sioux Falls, SD | \$2 M
- Ameritas Life Insurance Corp.** (Asbestos Abatement) Lincoln, NE | \$1-2 M
- Sears Store** (Asbestos Abatement) Omaha, NE | \$600 K
- Jones Street Power Station** (Asbestos Abatement) Omaha, NE | \$2 M
- Irwin Army Community Hospital** (Demolition) KS | \$350 K
- Fort Leonard Wood Army Hospital** (Asbestos Abatement) MO | \$400 K
- Otter Tail Power Plant** (Abatement and Demolition) MN | \$800 K
- Blanchfield Army Community Hospital** (Asbestos & Lead Abatement) KY | \$400 K
- Burlington Northern Locomotives** (Abatement of Locomotives) IL | \$600 K



KEY PROJECTS

MIDATLANTIC

**POTOMAC
ABATEMENT, LLC.**



ASBESTOS & LEAD ABATEMENT • DEMOLITION

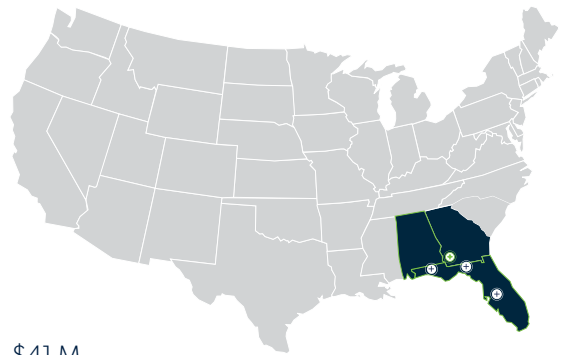


- Smithsonian National Air & Space Museum** (Abatement & Demolition) Washington, D.C. | \$7.5 M
- Martin Luther King, Jr. Memorial Library** (Abatement & Demolition) Washington, D.C. | \$9.7 M
- Intelligence Community Campus** (Abatement & Demolition) Bethesda, MD | \$7.8 M
- National Park Service Headquarters** (Abatement & Demolition) Washington, D.C. | \$1.5 M
- Embassy of Australia** (Asbestos Abatement) Washington, D.C. | \$1.16 M
- Smithsonian National Museum of Natural History** (Abatement & Demolition) Washington, D.C. | \$1.5 M
- Victory Center - 5001 Eisenhower Ave.** (Asbestos Abatement) Washington, D.C. | \$2.6 M
- Smithsonian Arts & Industries Building** (Asbestos Abatement) Washington, D.C. | \$1.8 M
- Museum of the American Educator** (Abatement & Demolition) Washington, D.C. | \$3.4 M
- Motion Picture Association of America Building** (Abatement, PCB caulk, Demolition) Washington, D.C. | \$2 M
- PNC Headquarters** (Abatement & Demolition) Washington, D.C. | \$2.1 M
- Lockheed Martin Headquarters** (Abatement & Demolition) Bethesda, MD | \$1.9 M
- Amazon DMD9** (Demolition) Prince George's County, MD | \$1.1 M
- Washington Gas** (Asbestos Abatement) Washington, D.C. | \$1.5 M
- Harriet Tubman Quadrangle** (Abatement & Demolition) Washington, D.C. | \$1.1 M
- Duke Ellington School for the Arts** (Abatement & Demolition) Washington, D.C. | \$4.8 M
- Woodrow Wilson High School** (Abatement & Demolition) Washington, D.C. | \$1.9 M
- The Watergate Hotel** (Asbestos Abatement) Washington, D.C. | \$1 M
- L'Enfant Plaza Hotel** (Abatement & Demolition) Washington, D.C. | \$1.8 M
- Jefferson Hotel** (Abatement & Demolition) Washington, D.C. | \$1.2 M
- Omni Shoreham Hotel** (Abatement & Demolition) Washington, D.C. | \$1.1 M
- Residences at St. Elizabeth's East** (Abatement & Demolition) Washington, D.C. | \$3.3 M
- Meridian Hill Hall** (Abatement & Demolition) Washington, D.C. | \$2.5 M
- Blair Apartments** (Asbestos Abatement) Silver Spring, MD | \$2.1 M
- Baltimore Gas & Electric Head Quarters** (Abatement & Demolition) Baltimore, MD | \$1.5 M



KEY PROJECTS

SOUTHEAST

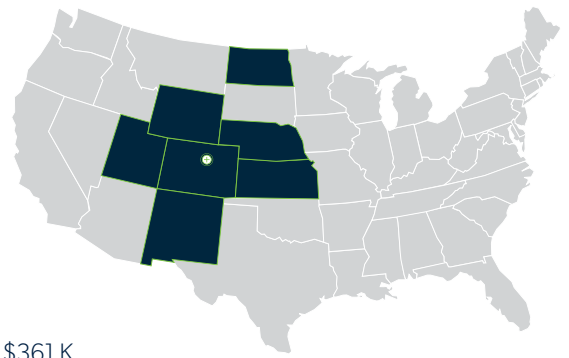


- Florida Dept. of Environmental Protection** (Site Assessment/Remediation) Florida | \$41 M
- Circle K Stores, Inc.** (Fuel System Repairs/Site Assessment/Remediation) Florida and Georgia | \$6 M
- Petro South, Inc.** (Fuel System Repairs/Site Assessment/Remediation) Florida and Georgia | \$3 M
- TA Operating, LLC** (Fuel System Repairs) Alabama, Georgia, and Florida | \$1 M
- Majors Management** (Fuel System Repairs/Site Assessment/Remediation) Florida | \$916 K
- EG Retail/Cumberland Farms** (Fuel System Repairs/Assessments) Florida | \$832 K
- Kars Petro Distributors** (Fuel System Repairs/Site Assessment/Remediation) Florida | \$816 K
- Urbieta Oil** (Fuel System Repairs/Site Assessment/Remediation) Florida | \$773 K
- Susie Q** (Fuel System Repairs/Site Assessment/Remediation) Florida and Georgia | \$656 K
- Prem Properties, LLC** (Site Assessment/Remediation) Alabama, Florida and Georgia | \$607 K
- Johnson & Johnson** (Fuel System Repairs/Site Assessment/Remediation) Florida | \$533 K
- MacMillan Real Estate** (Site Assessment/Remediation) Florida | \$502 K
- S&R/Neel Food Mart** (Site Assessment/Remediation) Quincy, FL | \$463 K
- Proctor & Gamble** (Emergency Response) Albany, GA | \$328 K
- 331 Mini Mart** (Source Removal/Remedial Action/Chemical Injections/Post Remedial Monitoring) Santa Rosa Beach, FL | \$296 K
- Vertex Engineering** (RCRA Assessment/Waste Characterization) Crestview, FL | \$211 K
- Busy Bee #34** (Site Assessment/Pilot Test/Remedial System/O&M) Lake City, FL | \$191 K
- First Coast Energy** (Compliance Testing/Fuel System Repairs) Florida | \$170 K



KEY PROJECTS

ROCKY MOUNTAINS



- Twin Star Energy** (Soil Excavation, Groundwater Sampling & Reporting) Aurora, CO | \$361 K
- Twin Star Energy** (Soil Excavation, Groundwater Sampling & Reporting) Greenwood Village, CO | \$428 K
- Former Bradley Petroleum Location** (Soil Excavation, Groundwater Sampling & Reporting) Wheat Ridge, CO | \$543 K
- Former Bradley Petroleum Location** (Remedial Technology Services, Soil Excavation, Groundwater Sampling) Thornton, CO | \$2.725 M
- Everyday Store** (Remedial Technology Services, Groundwater Sampling & Reporting) Longmont, CO | \$997 K
- Everyday Store** (Remedial Technology Services, Groundwater Sampling & Reporting) Colorado Springs, CO | \$308 K
- Former Sav-O-Mat Location** (Remedial Technology Services, Soil Excavation, Groundwater Sampling) Sterling, CO | \$809 K
- Former Speedy Mart** (Site Assessment, Pilot Testing, Soil Excavation, Fate & Transport Modeling) Denver, CO | \$1.03 M
- Conoco East** (Site Assessment, Pilot Testing, Air Sparging and Soil Vapor Extraction System Installation) Pagosa Springs, CO | \$400 K
- Former Dry Cleaning Location** (Site Assessment, Air Monitoring, Air Sparging and Soil Vapor Extraction System Installation) Denver, CO | \$175 K
- Former M&M Truck Stop** (Site Assessment, Soil Excavation, Soil Remediation, Groundwater Sampling & Reporting) Cortez, CO | \$650 K
- Former Sheridan Jiffy Stop** (Site Assessment, Pilot Testing, Excavation, Dewatering, Soil Remediation, Groundwater Sampling) Denver, CO | \$1 M
- Former Chittie Beto** (Site Assessment, Remedial Injections, Groundwater Sampling) Cortez, CO | \$280 K
- Former Pump & Pop** (Site Assessment, Remedial Injections, Fate & Transport Modeling, Groundwater Sampling) Littleton, CO | \$257 K
- Upstream Oil & Gas Client** (Air Sparging and Soil Vapor Extraction, In-Situ Chemical Oxidation Inject) Platteville, CO | \$420 K
- Upstream Oil & Gas Client** (Soil & Groundwater Assessment; Air Sparging and Soil Vapor Extraction, Closure Monitoring) La Salle, CO | \$225 K
- Upstream Oil & Gas Client** (Emergency Spill Response; Light Non-Aqueous Phase Liquid Abatement) Greeley, CO | \$726 K
- Upstream Oil & Gas Client** (Excavation; Soil & Groundwater Assessment; Groundwater Sampling, Remediation Development) Gilcrest, CO | \$142 K
- Upstream Oil & Gas Client** (Soil Assessment; Solar Soil Vapor Extraction, Groundwater Sampling, Closure Sampling) Keenesburg, CO | \$47 K
- J&B Food & Gas** (Site Characterization; Aquifer Testing, Fate & Transport Modeling, Pilot Testing) Greeley, CO | \$224 K
- Former Sav-O-Mat** (Site Characterization; Soil Vapor Monitoring, Air Sparging and Soil Vapor Extraction, UST Removal) Longmont, CO | \$955 K
- Empire** (Aquifer Testing, Fate & Transport Modeling, Remedial Technology Services, Groundwater Sampling) Broomfield, CO | \$231 K
- Wadsworth 66** (Aquifer Testing, Fate & Transport Modeling, Air Sparging and Soil Vapor Extraction, In-Situ Treatment) Wheat Ridge, CO | \$1 M
- Former Y-Mart Location** (Site Characterization, Air Sparging and Soil Vapor Extraction, UST Removal, Soil Excavation) Northglenn, CO | \$1 M
- Former Sav-O-Mat** (Air Sparging and Soil Vapor Extraction, UST Removal, Soil Excavation, Groundwater Sampling) Castle Rock, CO | \$2.5 M
- Former Vivid Color** (Fate & Transport Modeling, Remedial Technology Services, In-Situ Treatment, Groundwater Sampling) Lakewood, CO | \$2.5 M



THE EIS PARTNERSHIP OF COMPANIES COMMITMENT TO CUSTOMER SATISFACTION

There's a vast difference between serving customers and providing customer service. As a leader in turnkey asbestos abatement, demolition, and environmental remediation, EIS understands that difference. With EIS, you can be confident that we'll listen to your concerns, respond quickly to your requests, remain true to our word, and solve your challenges with integrity and honesty.

We are accountable to our customers, and our outstanding customer service surveys back up the quality of our work.



NORTH CAROLINA

5621 Departure Drive, Suite 101
Raleigh, NC 27616
(984) 284-5571
EISHoldings.com



EARTH SERVICES
& ABATEMENT

COLORADO

6700 E 50th Avenue
Commerce City, CO 80022
(303) 991-1280
ESAsite.com



TEXAS

4028 Daley Avenue
Fort Worth, TX 76180
(817) 595-0790
Go1Priority.com



IOWA

1901 Easton Boulevard
Des Moines, IA 50316
(515) 265-0005
IowaDemolition.com



ARKANSAS

7705 Northshore Place
North Little Rock, AR 72118
(888) 353-2080
SnyderEnvironmental.com



MARYLAND

8309A Sherwick Court
Jessup, Maryland USA 20794-3101
(410) 730-6888
PotomacAbatement.com



FLORIDA

21310 US-98 N
Trilby, FL 33593
(352) 583-2509
SimpsonEnv.com



GEORGIA

1741 Philema Road South
Albany, GA 31701
(800) 989-8298
AETIInc.com



COLORADO

8000 West 44th Avenue
Wheat Ridge, Colorado 80033
(303) 433-0479
eagle-enviro.com

